

PARKING AREA CONSTRUCTION NOTES

REMOVE ALL TOPSOIL & SUBSOIL  
 PREPARE 6" (MIN.) HARDENED SUBBASE (AFTER COMPACTION)  
 PROVIDE 6" COMPACTED "T-BASE" FINISHED SURFACE  
 INSTALL 2' WIDE x 3' DEEP x 70' LONG DRAINAGE TRENCH AS SHOWN  
 MAINTAIN 45' SCHOOL BUS TURNING RADIUS  
 SAVE EXISTING OAK TREE & UTILITY POLE



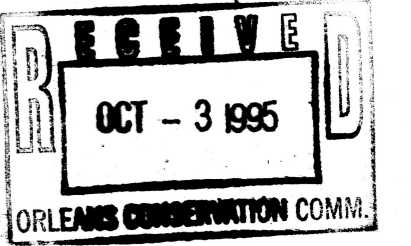
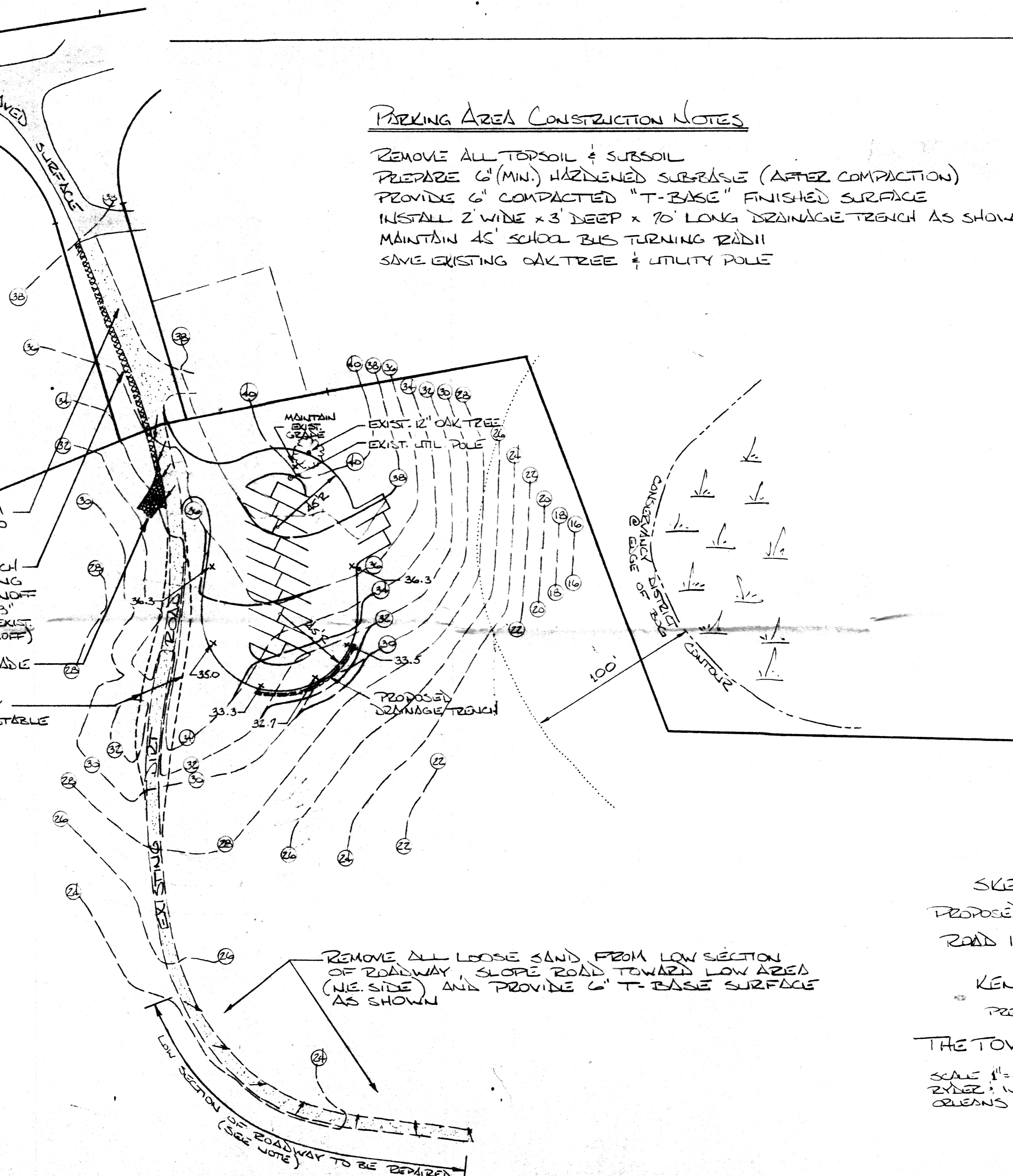
PROVIDE 6" T-BASE SURFACE FROM END OF EXISTING PAVED SURFACE TO PROPOSED DRAINAGE TRENCH

INSTALL STONE DRAINAGE TRENCH (2' WIDE x 2' DEEP) FROM END OF EXISTING PAVEMENT TO PROPOSED STONE RUNOFF (OPTION: PAVE ROAD 12' WIDE WITH 1.5" BERM ON WEST SIDE FROM END OF EXIST. PAVEMENT TO PROPOSED STONE RUNOFF)

INSTALL STONE RUNOFF AND GRADE AND SLOPE ROADWAY AS SHOWN

GRADE SHOULDERS OF ROADWAY BACK AS SHOWN TO ESTABLISH A STABLE SLOPE AT EDGE OF ROADWAY

REMOVE ALL LOOSE SAND FROM LOW SECTION OF ROADWAY, SLOPE ROAD TOWARD LOW AREA (NE. SIDE) AND PROVIDE 6" T-BASE SURFACE AS SHOWN



SKETCH PLAN  
 OF  
 PROPOSED PARKING AREA  
 &  
 ROAD IMPROVEMENTS  
 AT  
 KENT'S POINT  
 PREPARED FOR

THE TOWN OF ORLEANS  
 SCALE 1"=40'  
 RYDER: WILCOX  
 ORLEANS  
 SEPT. 29, 1995  
 T.R. & P.S.  
 MASS.